

The Sixteens 2015

Project: Deflected Double Weave
Date: November 2015
Intended Use: Light-Weight Shawl

Name: Nancy Hassel
Address: 59 Gildas Lane
Portsmouth, RI 02871
Phone: 401-683-7771
Email: nancy@hassel.net

Warp & Weft Yarn: Valley Yarns 8/2 Tencel from Webs
Colors: Black and Azure (Warp & Weft)

Reed: 12 dent **Sleyed:** 2 per Dent
Sett: 24 EPI and 24 PPI (AVL Auto Advance)
Width on Loom: 28 inches (24 inches wide after finishing)

Loom: AVL 16-Shaft Folding Loom with Compu-Dobby I
Software: ProWeave and Fiberworks PCW (Windows)

Finishing of Samples: Machine washed gentle & air dried flat used Laura Fry's *Magic In the Water* for guidance.

References: My primary resource was obtained as a free download from WeavingToday.com. The document is titled "School For Weavers deflected doubleweave: beyond the basics" by Madelyn van der Hoogt.

References:

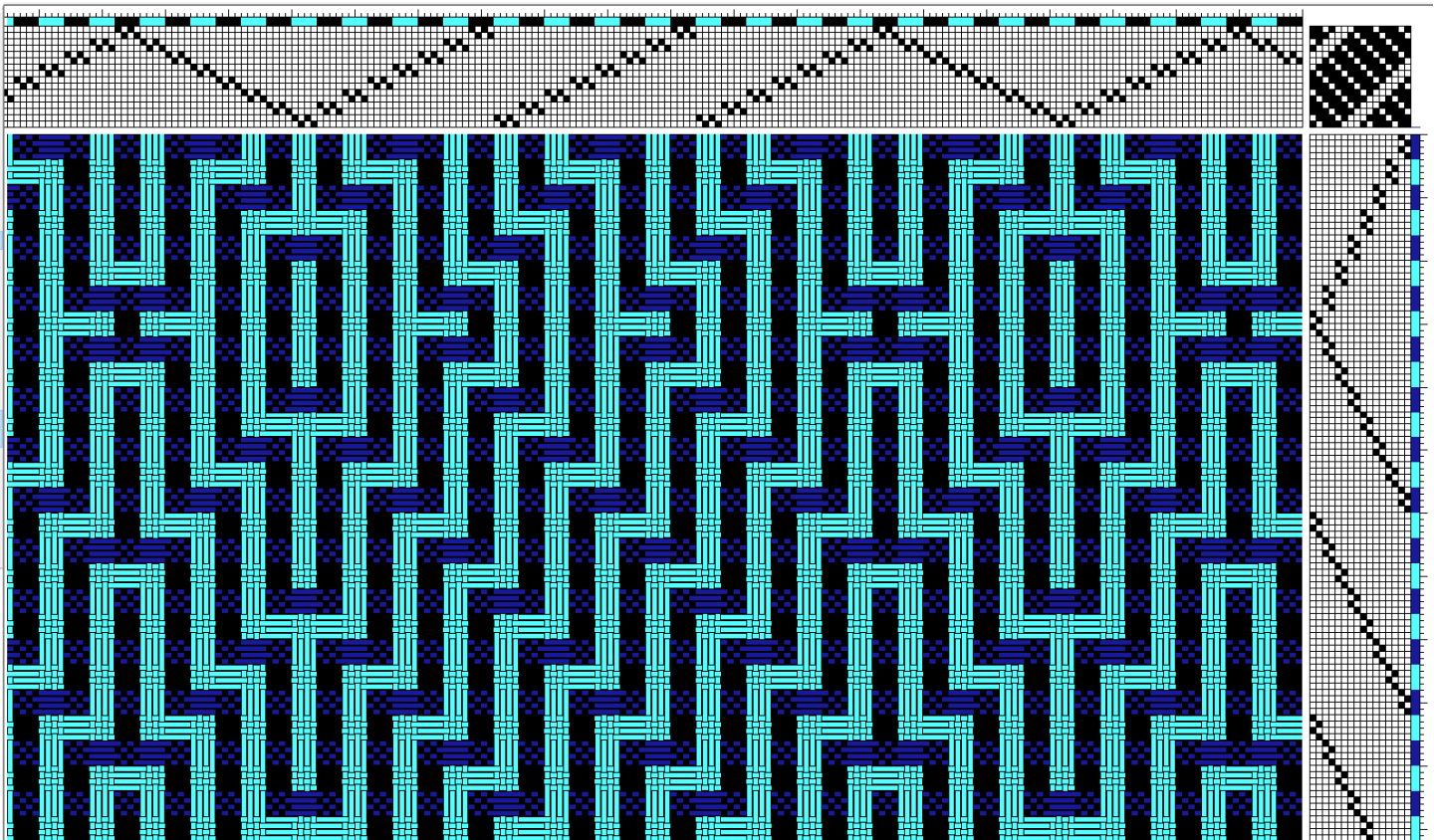
- <http://www.weavingtoday.com/media/p/40/showcontent.aspx> -> DeflectedDW.pdf - School for Weavers deflected Doubleweave: beyond the basics by Madelyn van der Hoogt
- Weaver's Magazine, Issue 37, Fall 1997 - "Fabrics that go bump!" articles by Carolyn Chapman and Lynn Tedder; article by Dini Moes, Drafting 'False Double Weave'
- Weaver's Magazine, Issue 44, Summer, 1999 - "Deflected Doubleweave" articles by Madelyn Van Der Hoogt, Tracy Kaestner, Ruth Morrison, Vicki Masterson and Holly Brackmann
- <http://www.weavingtoday.com/blogs/ask-madelyn/archive/2014/04/25/determining-sett-for-deflected-doubleweave.aspx> - Determining Sett for Deflected Doubleweave Ask Madelyn dated April 25, 2014
- <http://www.schachtspindle.com/drafts/e-hill-shawl.php> - Elisabeth Hill's Contest-Winning Shawl
- <http://weavolution.com/project/elisabethhill/cerulean-throw> - Elisabeth Hill's Cerulean Throw.
- <http://gangewifre.blogspot.com/2011/07/deflected-double-weave.html> - Deflected Double Weave from Gangewifre Weaving
- I poured over a draft for 16 shaft deflected double weave found in the Files section of WeaveTech (DeflectedDoubleWeave.WIF posted by R S Blau)
- <http://www.weavingtoday.com/blogs/weaving-today/archive/2014/04/23/deflected-doubleweave-and-facing-fears.aspx> - Deflected Doubleweave and Facing Fears by Christina Garton
- <http://weavolution.com/taxonomy/term/1747> - Projects posted with key word = "Deflected Double Weave" on Weavolution

Sampling: This fabric was planned for use as a light and compressible shawl. I also wanted Ends Per Inch (EPI) to precisely equal Picks Per Inch (PPI). I frequently weave non-square fabric with EPI differing considerably from PPI, but this Deflected Double Weave draft seemed most pleasing if woven square. It was therefore necessary to weave a small sample of the final draft to determine if 24 EPI & 24 PPI could be structurally sound while meeting the goal of maximally soft hand. A sample at 30 EPI and PPI was too solid-feeling for this use, but it might be a most desirable sett for a narrow, somewhat firm scarf. I gather from the email comments within the study group that 28 EPI might be the safest sett.

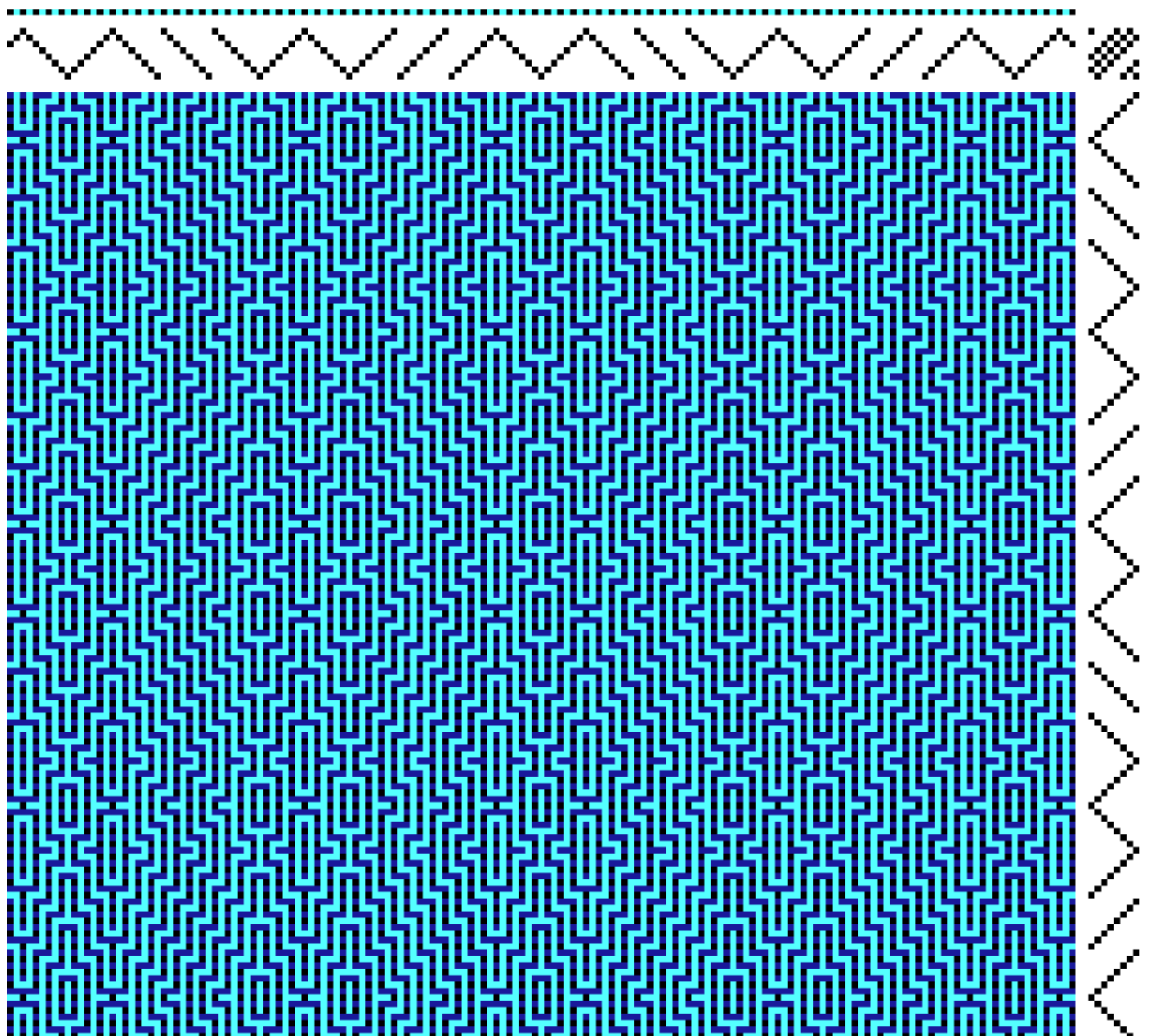
Drafting Technique: This was my first attempt at deflected doubleweave. All the drafts made sense visually and the articles made sense structurally. I could not figure out how to get to the starting point of composing an original design. In desperation, I decided to just try to blindly follow the instructions in the DeflectedDW.pdf article with the hope that understanding would follow. The instructions (written for 8 shafts) were: *"For design ideas, you can use any 4-shaft twill draft that alternates even and odd shafts and even and odd treadles as a 'profile' draft."* Because 16 shafts (8 blocks) were required, I found an 8 shaft twill draft that satisfied these specifications. *"Create a draft with one square for each threading and treadling block, alternating dark and light."* So then I found a color that contrasted with the first warp color and applied it to every other thread in the warp. For convenience, I copied the threading plan into the treadling plan (tromp as writ). This created a color-and-weave draft. Then I applied one of Madelyn and der Hoogt's simple twill tie-ups to ensure **"Blocks A and C must alternate with a "treadle" producing plain weave in Blocks B and D."** The resulting profile draft looked like all of the examples I had seen, and it was visually pleasing. I next performed a lot of experimentation until I found a profile draft I liked. During the experimentation, if things "fell apart" (looked really wrong) then I would perform a flip on the tie-up and it would look right again. To create the actual draft, I used ProWeave's Tools=>Block Substitution Tool and selected "False Double Weave 4 threads per cell." The entire process was easy, ProWeave is not written for enormous drafts and my shawl draft was 668 ends x 592 picks (167 blocks x 148 blocks). I purchased Fiberworks PCW for additional fine-tuning.

Draft: The 8-block profile draft was 167 blocks wide for a 28" shawl. It was translated into a final draft in tie-up format that is 668 threads wide. Both drafts are posted in wif format at <http://fiber.hassel.net>.

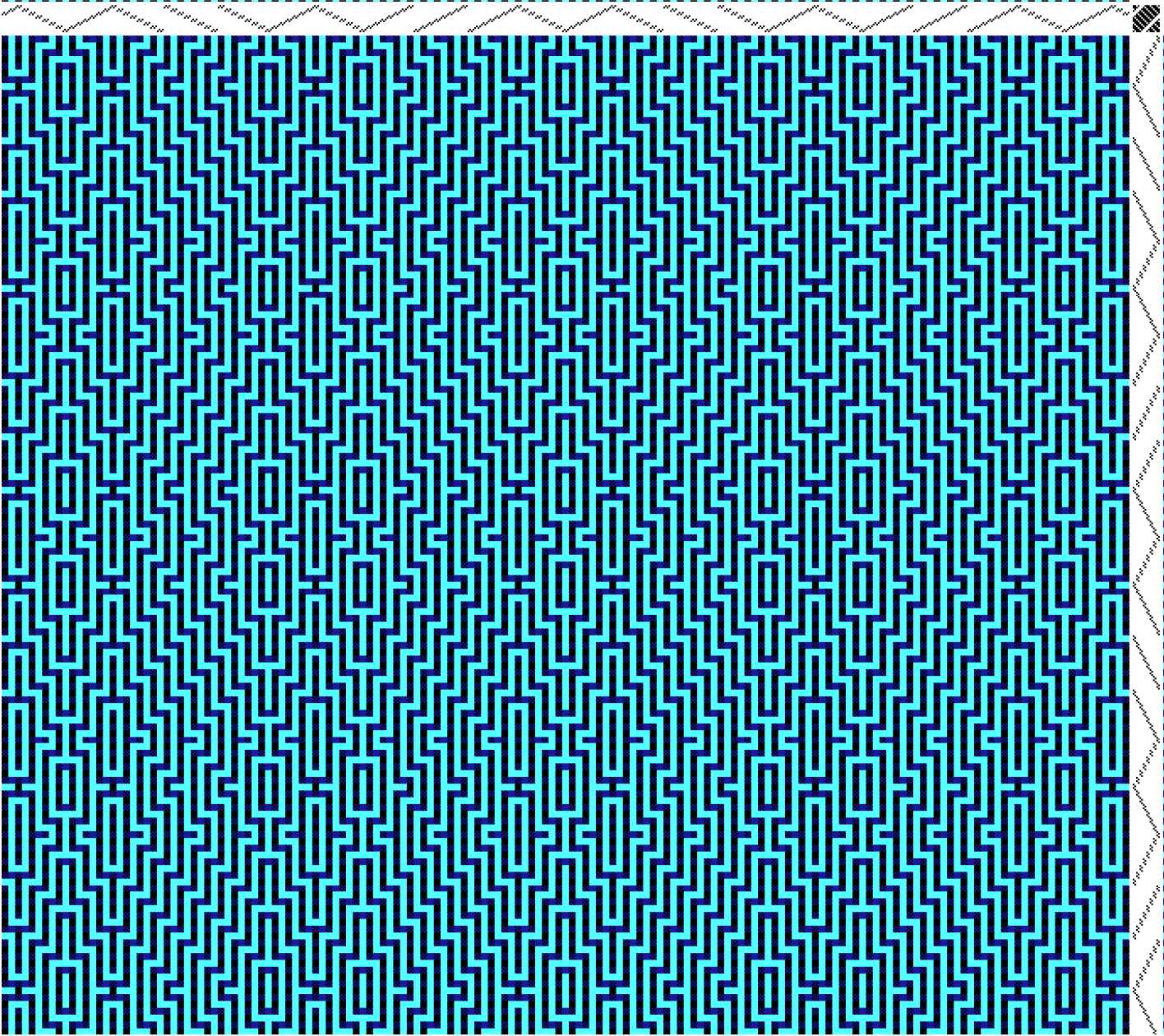
Close-Up of Partial Draft:



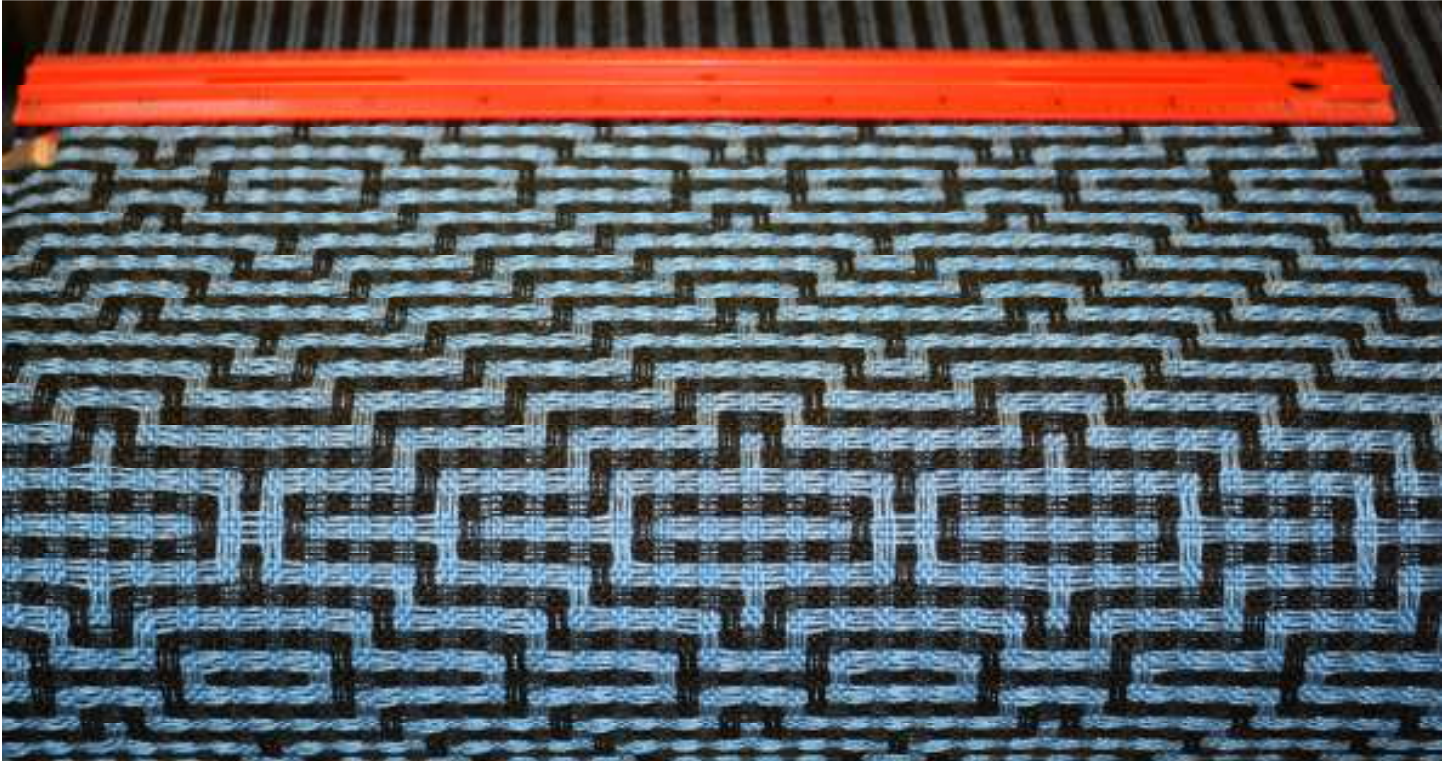
Profile Draft (167 wide x 148 high):



Full Draft (668 ends x 592 picks):



Sample On The Loom:



Sample After Finishing:

