

# The Sixteens 2017

**Project:** Echo  
**Date:** October 2017  
**Intended Use:** Wall Hanging

**Name:** Nancy Hassel  
**Address:** 59 Gildas Lane  
Portsmouth, RI 02871  
**Phone:** 401-683-7771  
**Email:** nancy@hassel.net

**Warp 1:** 8/2 Cotton "Columbine" Painted by Blazing Shuttles (Kathryn Webber)  
**Warp 2:** 8/2 Cotton Black from The Woolery  
**Weft:** 30/2 Cotton Black from Vavstuga

**Reed:** 10 Dent   **Sleyed:** 4 per Dent (2 painted, 2 black)  
**Sett:** 20 EPI per warp (40 EPI total) and 20 PPI (AVL Auto Advance)  
**Width on Loom:** 20.0 inches (400 ends of each warp)  
**Width after Finishing:** 19.25 inches

**Loom:** AVL 16-Shaft Production Dobby Loom with Compu-Dobby I & 2 Warp Beams  
**Software:** ProWeave (loom driver) and Fiberworks PCW (design) on Windows PC

**Sampling and Weaving:** The warps were beamed separately for convenience. The AVL Geared (old-style) Auto-Advance with a 20-pick wheel was adjusted to 1 click per beat to almost achieve 20 PPI. It was occasionally necessary to throw in an extra beat to advance the cloth. To increase the density of the cloth I beat with an open shed. Turned Taquete is generally woven with a much finer weft than warp. I started with a weft of 16/2 cotton and felt the weave was too dense and the pattern seemed muddy. The change to a 30/2 weft was immediately pleasing.

**Finishing:** The woven cloth was not "finished." Flying in the face of all conventional wisdom, I plan to use the fabric as it came from the loom.

**Draft as WIF:** is posted on <http://fiber.hassel.net>

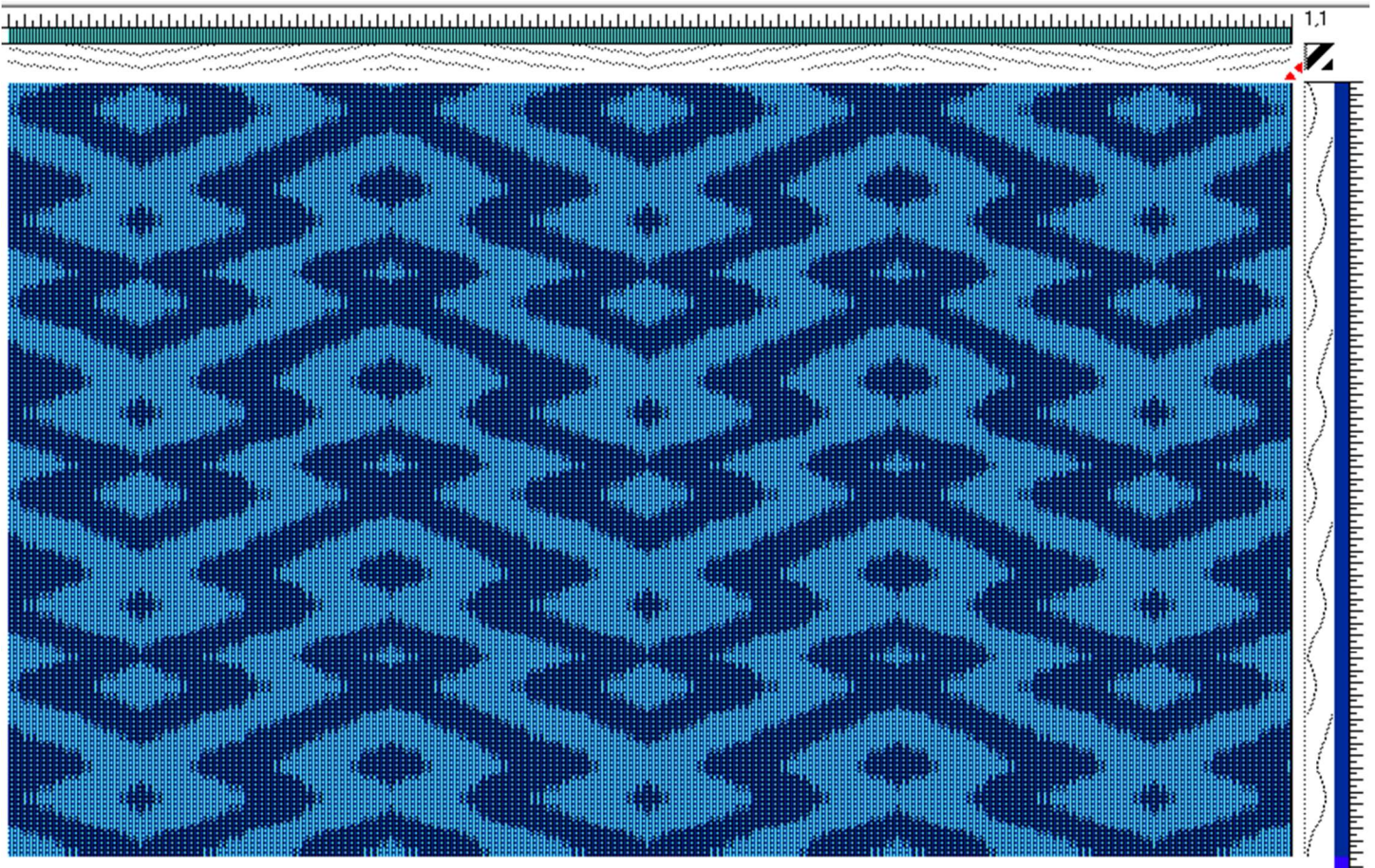
**Eva Stossel's Draft:** I discovered this incredible draft on Eva Stossel's blog two years ago. I bookmarked it and viewed it repeatedly because I liked it so much. <https://evasweaving.wordpress.com/2015/12/05/warp-painting-turned-taquete-plain-weave/> I eventually asked Eva for her draft and expanded it to 16 shafts. I truly love her draft. Eva and her draft are certainly deserving of the recognition received via awards.

## References:

- Heritage Spinning <https://heritagespinning.com/2008/11/one-warp-many-fabrics/> describes Echo and summarizes early work by Helene Bress: The Weaving Book states Echo "seems to have originated in a newsletter put out by Bertha Needham in the 1930's". From Bress, Echo can be in the threading or treadling.
- Alice Schlein: Echo Weave: Something Old and Something New in Weaver's 32 - 1996 & available as a Monograph <http://weaverly.typepad.com/weaverly/2011/11/echo-weave-monograph.html>
- Max Halperin: Polychrome Echo Weave on Eight <https://gustavus.edu/mcs/max/weaving/scarfart/> - this 1999 article inspired Marian Stubenitsky; the article documents an Echo scarf pictured in Weaver's 44 without draft.
- Sandra Rude: Adventures in Parallel Threading Parts I and II <http://www.3springshandworks.com/CWarticle.htm>
- Eva Stossel: Echo Weave & Interleaved Echo Weave. <https://evasweaving.wordpress.com/2015/12/05/warp-painting-turned-taquete-plain-weave/>

- Marian Stubenitsky (2014) summarizes: *I chose the title "Weaving with Echo and Iris" because the book is based on anything that can be woven on an echo threading.*
- Denise Kovnat: Echo Weave and Turned Taquete <http://www.denisekovnat.com/2015/01/echo-weave-and-turned-taquete.html>
- Thrumbs (Susan Harvey): Long Echo <http://weeverwoman.blogspot.com/2010/08/long-echo.html>
- Dust Bunnies Under My Loom: Echo Weave on 12 Shafts <http://dustbunniesundermyloom.blogspot.com/2009/06/echo-weave-on-12-shafts.html>
- Meg Weaves: Corkscrew Shadow and Echo Weaves Notes <http://www.megweaves.co.nz/2009/08/corkscrew-shadow-and-echo-weaves-note.html>
- Cally Booker: Echo Weave vs Shadow Weave <https://callybooker.wordpress.com/2009/08/13/echo-weave-vs-shadow-weave/> (the site is now marked private)
- StudioTupla.com: Echo <https://studiotupla.com/blog/echo-weave.html>

## Full Draft:







I, Nancy Hassel, agree to have this sample and corresponding information shared electronically with other Complex Weaver members through the Complex Weaver Library.

Signature: Nancy Hassel Date: 2-Nov-2017