

The Sixteens 2016

Project: Lampas
Date: October 2016
Intended Use: Upholstery

Name: Nancy Hassel
Address: 59 Gildas Lane
Portsmouth, RI 02871
Phone: 401-683-7771
Email: nancy@hassel.net

Ground Warp & Weft Yarn: 10/2 Egyptian Mercerized Cotton; Natural Color from RM Yarns
Secondary (Binding) Warp: 24/2 "Spectrum Dyed Yarns, Inc. Karded Cotton 112259 Fr Bark" from Peter Pachis in Central Falls, RI
Secondary (Floating) Weft: 2 strands of "Clr: G Nutmeg, Size: 1/4.5, Acril: 98% Nyl: 2%" from Peter Pachis in Central Falls, RI

Reed: 12 dent **Sleyed:** 3 per Dent (2 ground, 1 secondary)
Sett: 36 EPI and 32 PPI (AVL Auto Advance)
Warps were Beamed Separately
Width on Loom: 25.33 inches (608 ends of 10/2 & 304 ends of 24/2)
Width after Finishing: 24.25 inches
Length: 90 picks @32 ppi = 2.8125" became 2.6125" inches after finishing

Loom: AVL 16-Shaft Folding Loom with Compu-Dobby I, Double-Box fly shuttle & 2 Warp Beams
Software: ProWeave and Fiberworks PCW (Windows)

Draft as WIF: is posted on <http://fiber.hassel.net>

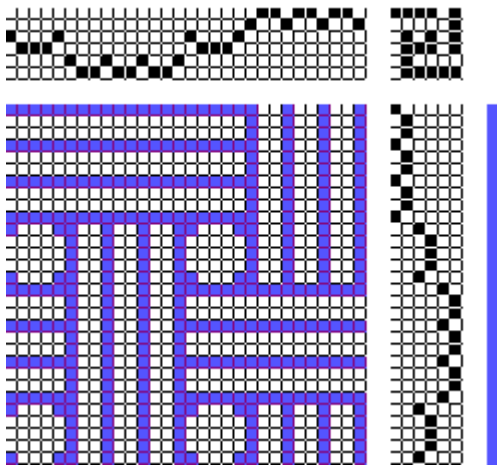
Sampling and Weaving: The symmetrical geometry of the profile draft created the requirement of "weave to square." The intended use as upholstery fabric made it important to create a dense fabric. It took about 18 inches of experimental sampling to determine the number of pattern shots required to weave to square. The initial plan had been to weave a broken twill for the ground warp and weft interlacement. While sampling, it was obvious the broken twill ground weft was periodically visible in the pattern area (looked terrible - created a line). The appearance of the weaving improved dramatically after the ground interlacement (controlled by "treadles" 1-4) was changed to plain weave. The AVL Geared (old-style) Auto-Advance with a 32-pick wheel was adjusted to 1 click per beat to achieve 32 PPI. It would not have been possible for me to beat more firmly. To achieve this maximally firm beat I beat with an open shed and used a bit of force. Interestingly, draw-in on the loom seemed non-existent. It did not seem necessary to use edge weights (kludged temple) so I did not.

Finishing of Samples: Washed in machine set to delicate & cold then hung to dry.

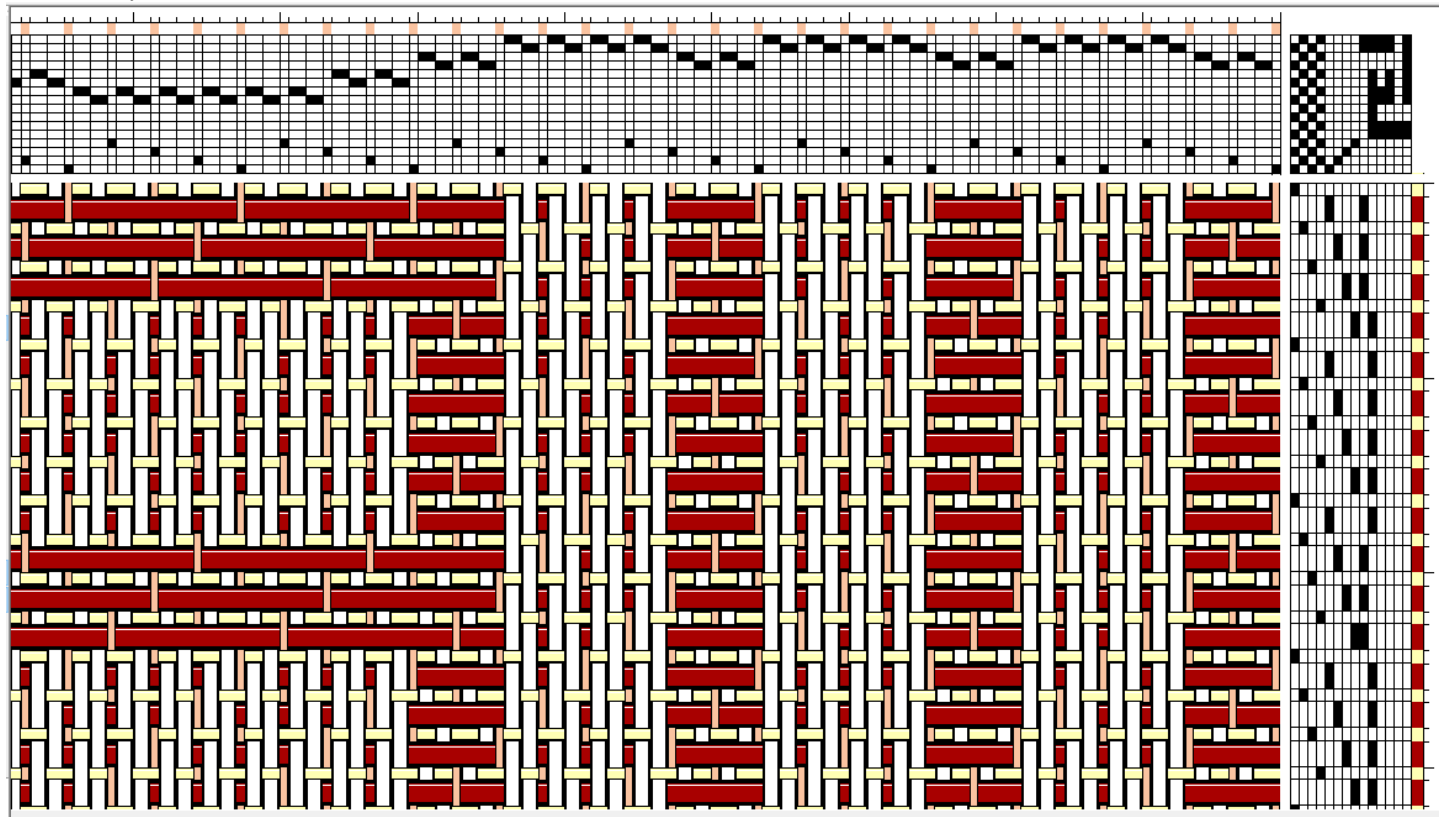
References:

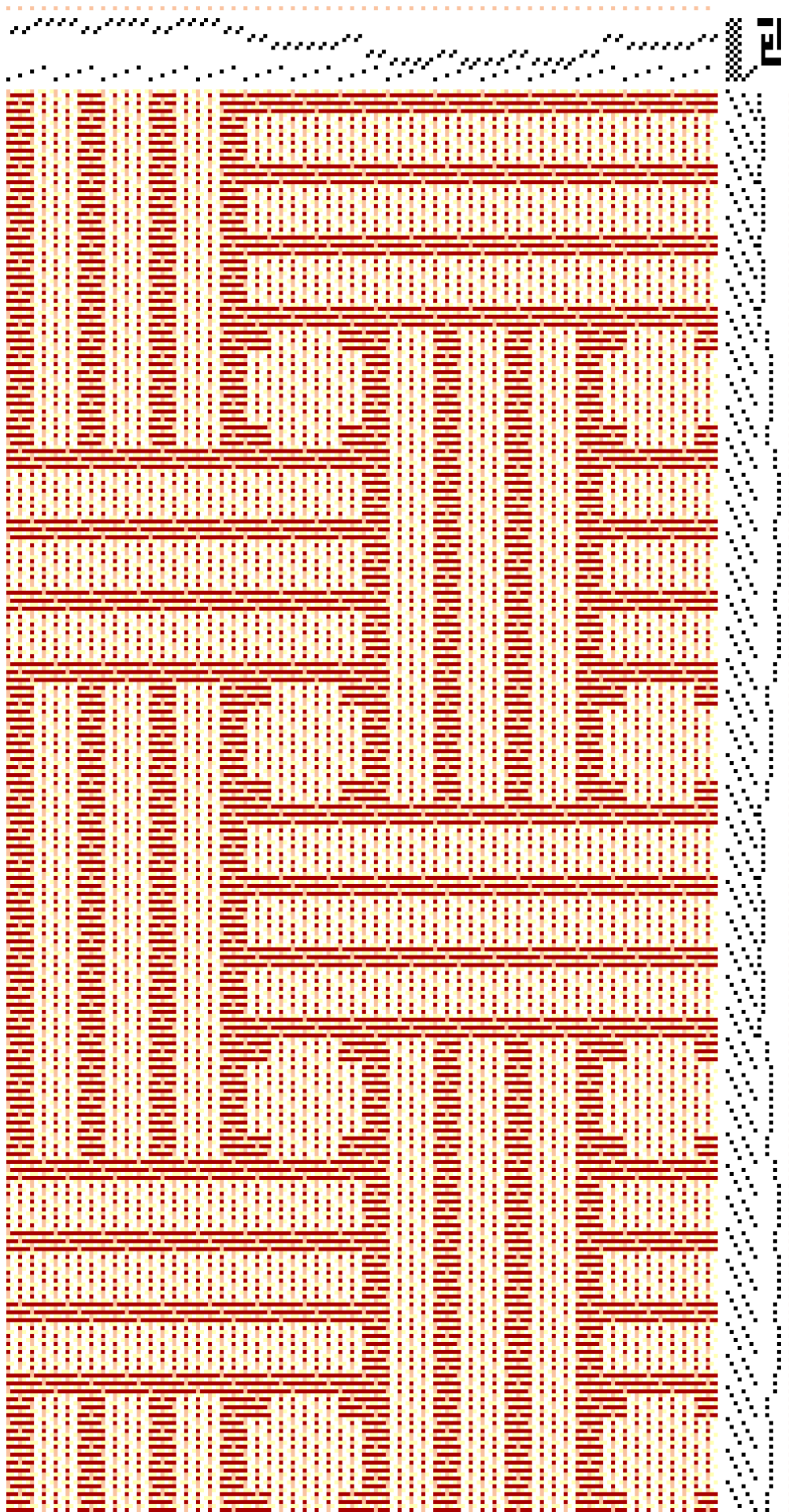
- The 6 block profile draft was obtained from *Roses and Snowballs: the Development of Block Patterns in the German Linen-Weaving Tradition* by Patricia Hilts, *Ars Textrina* 5 (1986), pp 167-248 available via <http://ulita.leeds.ac.uk/research/ars-textrina-textiles-group/ars-textrina-journals/>
- *Lampas and Contrails Coverlet* by Jacquie Kelly, *Prairie Wool Companion Magazine* #15, page 46-50
- *Lampas for 8* by Donna Sullivan, *Prairie Wool Companion Magazine* #16, page 34-40
- Chapter titled *Lampas* in *The Complete Book of Drafting for Handweavers*, by Madelyn Van Der Hoogt, starting on page 104. The diagrams of the structure are excellent.
- *Pattern and Loom* by John Becker, Chapter 6, pp133-168.
- *Lampas for Dobby Version 3b* by Alice Schlein - 68 pages with accompanying wif files. This monograph was insightful and will provide inspiration for my future, more ambitious, Lampas efforts.

Profile Draft:



Close-Up of Partial Draft:





Full Draft:



